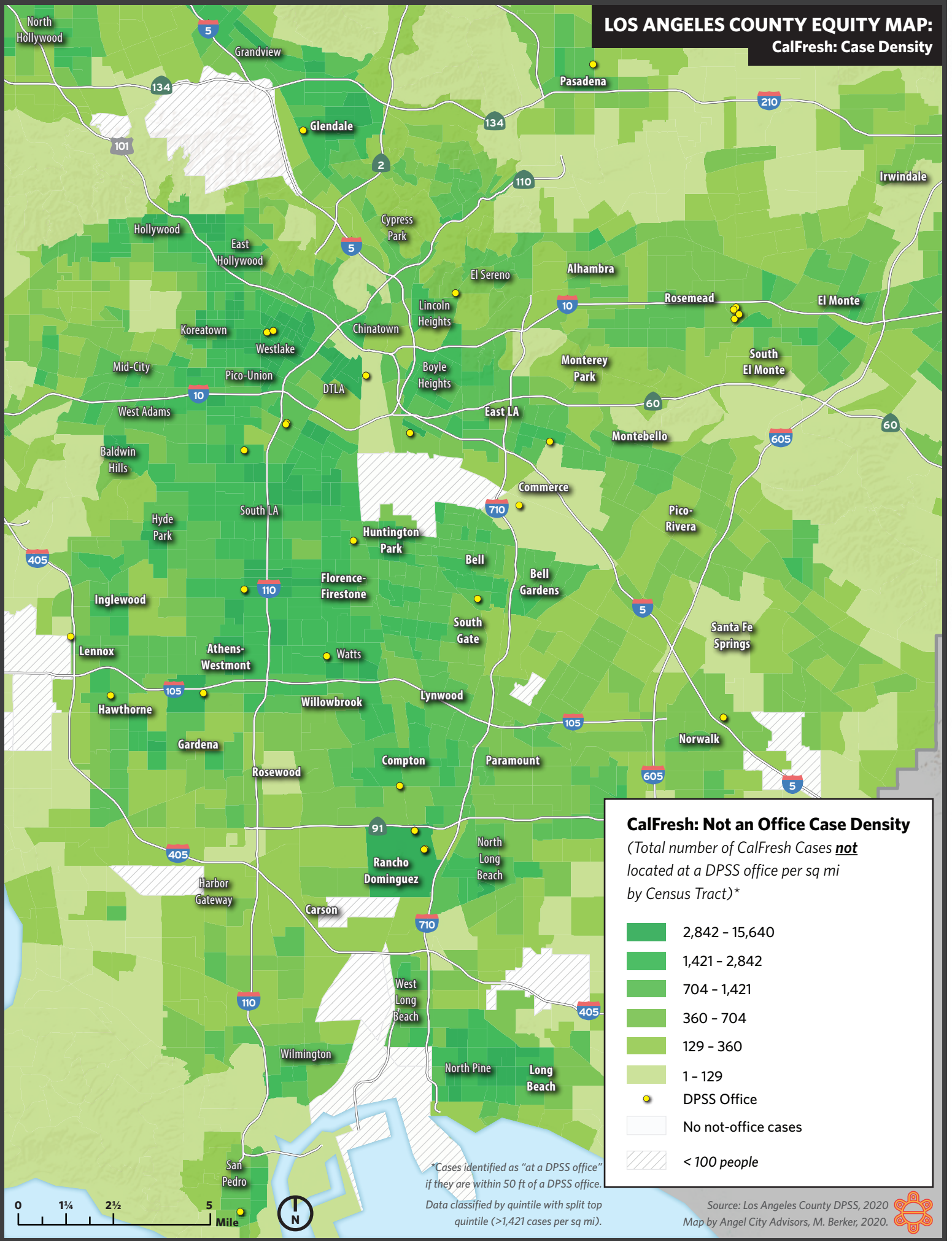


LOS ANGELES COUNTY EQUITY MAP: CalFresh: Case Density



CalFresh: Not an Office Case Density

(Total number of CalFresh Cases *not* located at a DPSS office per sq mi by Census Tract)*

- 2,842 - 15,640
- 1,421 - 2,842
- 704 - 1,421
- 360 - 704
- 129 - 360
- 1 - 129

- DPSS Office
- No not-office cases
- < 100 people

*Cases identified as "at a DPSS office" if they are within 50 ft of a DPSS office.

Data classified by quintile with split top quintile (>1,421 cases per sq mi).

Source: Los Angeles County DPSS, 2020
Map by Angel City Advisors, M. Berker, 2020.

