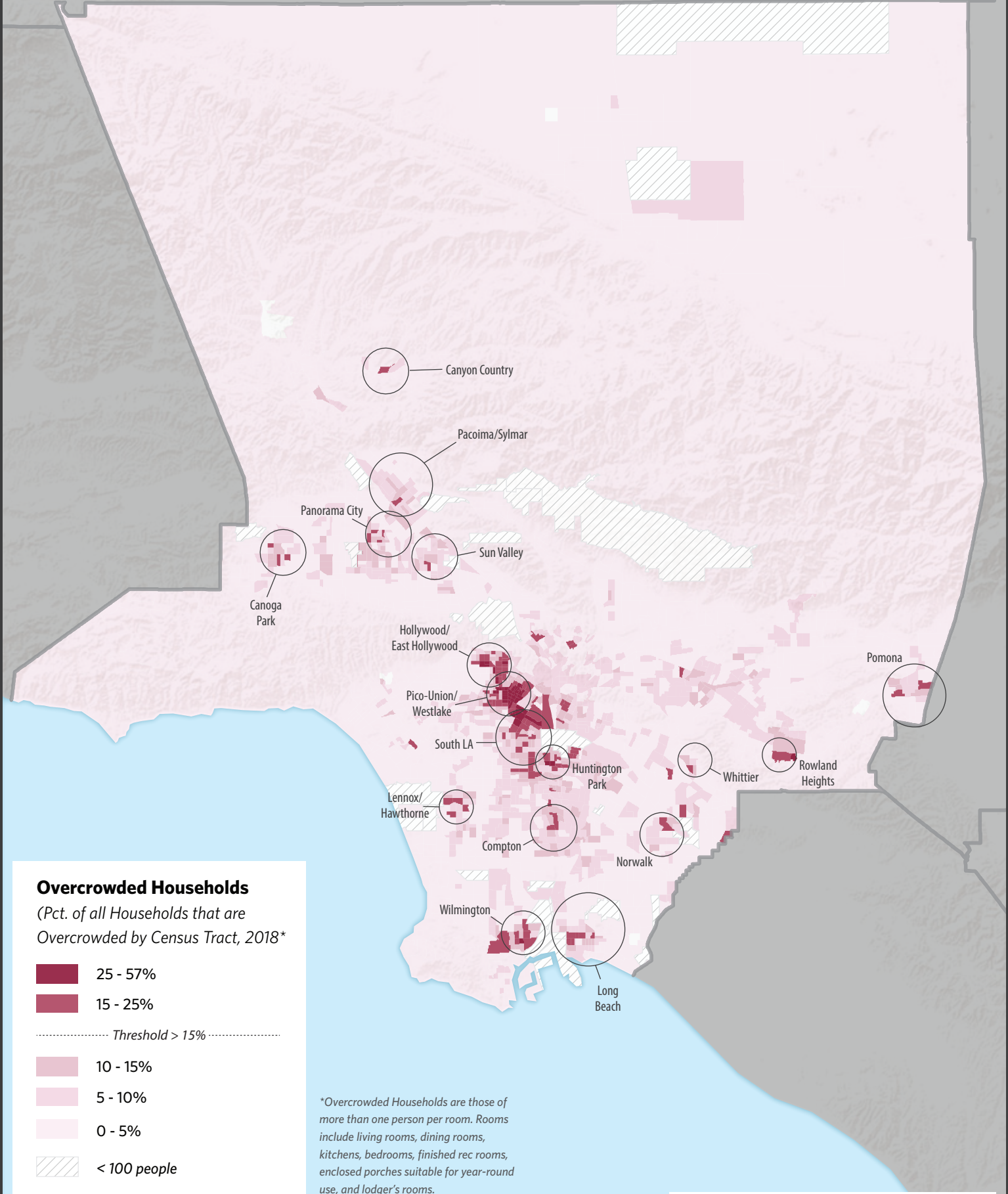
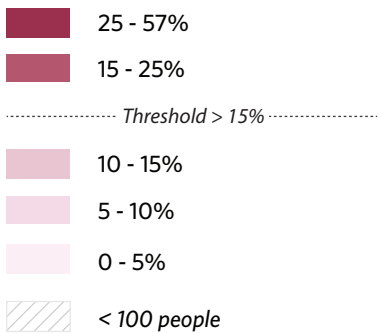


# LOS ANGELES COUNTY EQUITY MAP: Overcrowding



## Overcrowded Households

(Pct. of all Households that are Overcrowded by Census Tract, 2018\*)



\*Overcrowded Households are those of more than one person per room. Rooms include living rooms, dining rooms, kitchens, bedrooms, finished rec rooms, enclosed porches suitable for year-round use, and lodger's rooms.



Source: Program for Environmental and Regional Equity (PERE) USC, 2020  
Map by Angel City Advisors, M. Berker, 2020.

