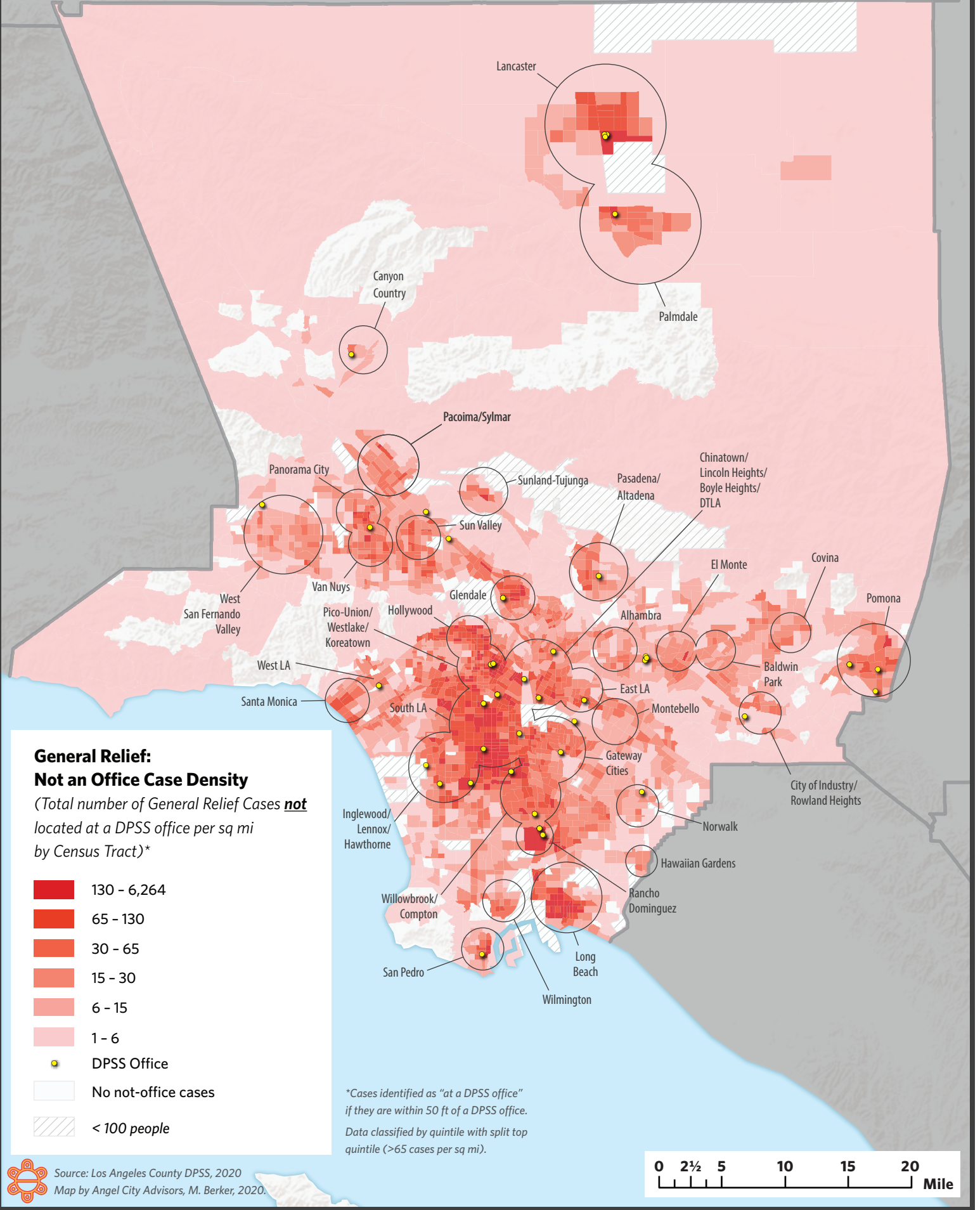


# LOS ANGELES COUNTY EQUITY MAP: General Relief: Case Density



**General Relief:  
Not an Office Case Density**  
(Total number of General Relief Cases **not** located at a DPSS office per sq mi by Census Tract)\*

- 130 - 6,264
- 65 - 130
- 30 - 65
- 15 - 30
- 6 - 15
- 1 - 6
- DPSS Office
- No not-office cases
- < 100 people

\*Cases identified as "at a DPSS office" if they are within 50 ft of a DPSS office.  
Data classified by quintile with split top quintile (>65 cases per sq mi).